

Microsoft Hardware 2009/2010 New Products Factsheet

Bluetooth Mobile Keyboard 6000

- **Ultrathin, stylish design** looks great at home or on the go.



- **Comfort Curve** keyboard design encourages natural wrist posture with a slight 6-degree curve and is easy to use.
- **Portable Bluetooth Number Pad** included for added productivity and comes with a carrying case for added portability.
- **Bluetooth wireless** frees up USB ports by easily connecting to any computer enabled with Bluetooth, no transceiver needed.
- **Up to 10 months of battery life with an on/off switch** that conserves battery life.¹
- **Two-color battery life indicator** warns people when it is time to replace the batteries.

Wireless Comfort Desktop 5000



Wireless Comfort Keyboard 5000

- **Comfort Curve** keyboard design encourages natural wrist posture with a slight 6-degree curve and is easy to use.
- **Soft-touch palm rest and removable feet** provide a more comfortable experience for extended use.

Microsoft® Hardware

Microsoft®

Your potential. Our passion.™

Discover the Difference

- **NEW! Taskbar Favorites for Windows 7** lets people access their open programs by mapping to the location of applications on the improved Windows Taskbar. The icons in the Taskbar can be easily rearranged just by clicking and dragging, and Taskbar Favorites will instantly adapt to the icons' new locations.²
- **Modern, contoured design** minimizes desktop clutter.
- **2.4GHz wireless** USB mini-transceiver connects wirelessly at a range of up to 30 feet.
- **Media keys** give consumers one-touch access to popular media functions.

Wireless Mouse 5000

- **BlueTrack Technology works on virtually any surface**, going more places than optical and laser mice, including on granite, marble, carpet and wood.
- **2.4GHz wireless** USB mini-transceiver connects wirelessly at a range of up to 30 feet.
- **Two AA batteries** provide up to eight months of battery life.
- **Snap-in transceiver** offers consumers the portability of a notebook mouse with the comfort of a full-size mouse, for use on the desk and on the go. When stowed, the transceiver turns off the mouse to conserve battery life.

LifeCam Cinema



- **New! First consumer webcam with 720p high definition (HD) sensor¹** delivers widescreen video at 16:9 at up to 30 frames per second.
- **New! Auto Focus** keeps video sharp from far away to extreme close-ups (4 inches from the webcam). No need to tinker with webcam settings — everything is done automatically.
- **New! ClearFrame Technology** provides smooth, detailed video with an improved de-noiser, which reduces image graininess — especially in low light — to keep video sharp and clear, and a faster image-processing technology keeps video smooth at any resolution.
- **High-precision glass element lens** offers clear video quality: no more blurry corners in videos.

Microsoft® Hardware

Microsoft®

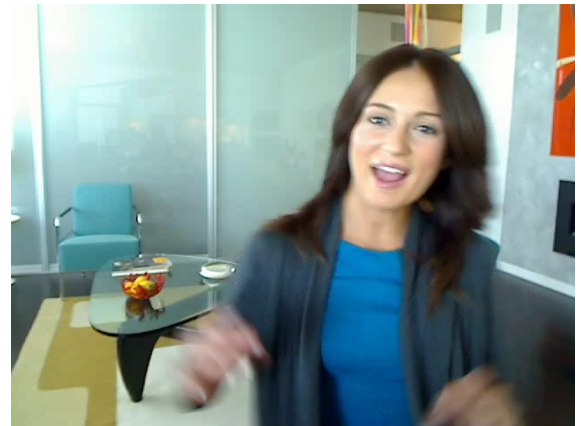
Your potential. Our passion.™

Discover the Difference

- **5.0 megapixel stills** deliver crystal-clear photographs to share with friends and family.
- **Digital, noise-canceling microphone** isolates background noise and lessens interference from other electronic devices to improve audio quality.
- **Flexible attachment base** bends to fit on most surfaces, including on top of flat-screen monitors and notebook screens, or directly on the desk.
- **Windows Live Movie Maker and Windows Live Photo Gallery** integration allows people to easily turn photos and video memories into extraordinary movies and upload them to popular sharing sites such as YouTube with one click.



LifeCam Cinema



Leading Competitive Webcam

Microsoft® Hardware

Discover the Difference
Wireless Mobile Mouse 4000

Microsoft®
Your potential. Our passion.™



- **Perfect package for netbooks or any PC** with a compact shape, Nano transceiver and go-anywhere BlueTrack Technology.
- **BlueTrack Technology** is the world's most advanced tracking technology, working on more surfaces than optical and laser, including granite, marble, carpet and wood. BlueTrack does not work on glass or clear mirrors.
- **NEW! Snap-in Nano transceiver** gives consumers the option to leave the transceiver plugged into the computer or conveniently store it under the mouse. When stowed, the transceiver turns off the mouse to conserve battery life.
- **Comfortable, ambidextrous design** offers cross-hatched rubber side grips and portable comfort for use in either hand.
- **NEW! One AA battery** provides more than 10 months of battery life for extended use, and on-off button helps conserve battery life.
- **Two-color battery life indicator** warns consumers when it is time to replace the batteries.
- **2.4GHz wireless technology** gives consumers a confident wireless connection and a range of up to 15 feet, even in crowded wireless environments.